

ITX-002 INDOOR BROADBAND TRANSMITTER

- **Broadband Transmitter with 80 Channel Capability**
- **Can Feed One Link of 6 Miles or Four Links of 3 Miles each with 40-Channel Loading**
- **Upgradable, Modular Design**
- **Requires only 7 inches of Indoor Rack Space**
- **Digital Ready**



PRODUCT APPLICATION:

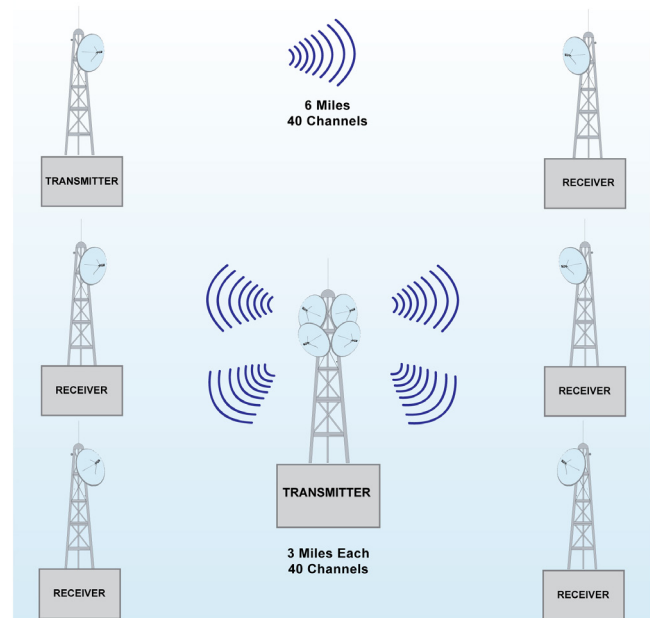
The ITX-002 is a solid state broadband transmitter designed to implement high quality, cost-effective microwave links for transporting up to 80 television channels.

This transmitter can be used to feed a single link or several links simultaneously. A typical application example would be a single 6-mile (10 kilometer) link with 40 channel loading, or 4 simultaneous links of 3 miles (5 kilometers) each.

The ITX-002 is rack mounted for convenience and ease of access to components. It incorporates the latest Gallium Arsenide power amplifier technology to deliver a clean, reliable signal.

Output signal monitoring and diagnostic measurements are available locally or remotely via Internet.

Designed for many years of trouble-free operation, the ITX-002 can be field upgraded to higher power units of the ITX solid state family of transmitters.



Product Specification¹

CABLE AML

Transmitter																					
Input Frequency ² :	54 to 550 MHz																				
Nominal Input Level for 12 TV:	+20 dBmV (-29 dBm)																				
Output Frequency ² :	12.7 to 13.25 GHz																				
Output Level for 65 dB C/CTB:	<table border="1"> <thead> <tr> <th>Channels</th> <th>dBm/Channel</th> <th>C/N (dB)</th> </tr> </thead> <tbody> <tr> <td>12</td> <td>-8.0</td> <td>65.5</td> </tr> <tr> <td>21</td> <td>-10.0</td> <td>63.0</td> </tr> <tr> <td>35</td> <td>-12.5</td> <td>60.5</td> </tr> <tr> <td>60</td> <td>-15.0</td> <td>58.0</td> </tr> <tr> <td>80</td> <td>-16.0</td> <td>55.5</td> </tr> </tbody> </table>			Channels	dBm/Channel	C/N (dB)	12	-8.0	65.5	21	-10.0	63.0	35	-12.5	60.5	60	-15.0	58.0	80	-16.0	55.5
	Channels	dBm/Channel	C/N (dB)																		
	12	-8.0	65.5																		
	21	-10.0	63.0																		
	35	-12.5	60.5																		
	60	-15.0	58.0																		
80	-16.0	55.5																			
Normal Gain ³ :	13 dB																				
Frequency Response:	±1 dB																				
Frequency Stability:	0.0005%																				
Input Return Loss:	15 dB																				
Input Connector:	Type "F"																				
Output Return Loss:	18 dB																				
RF Output Connector	WR-75 Waveguide																				
Temperature Range:	60° to 100°F (16° to 32°C)																				
Humidity:	95% max.																				
Primary Power:	120/240 VAC, 50/60Hz (per customer specification)																				
Power Consumption:	75 VA RMS																				
Mounting:	EIA Standard Relay Rack																				
Weight:	18 lb. (8.2 kg)																				
Dimensions:	19" rack width x 12.5" H x 24" D (48.3cm W x 31.8cm H x 61cm D)																				

¹ Specifications subject to change without prior notice.

² For Group C. Other frequencies available.

³ Gain may be varied with 10dB attenuator.