

## ITX-005 INDOOR BROADBAND TRANSMITTER

- **Broadband Transmitter with 80 Channel Capability**
- **Can Feed One Link of 10 Miles or Four Links of 6 Miles each with 40-Channel Loading**
- **Upgradable, Modular Design**
- **Requires only 7 inches of Indoor Rack Space**
- **Digital Ready**



### PRODUCT APPLICATION:

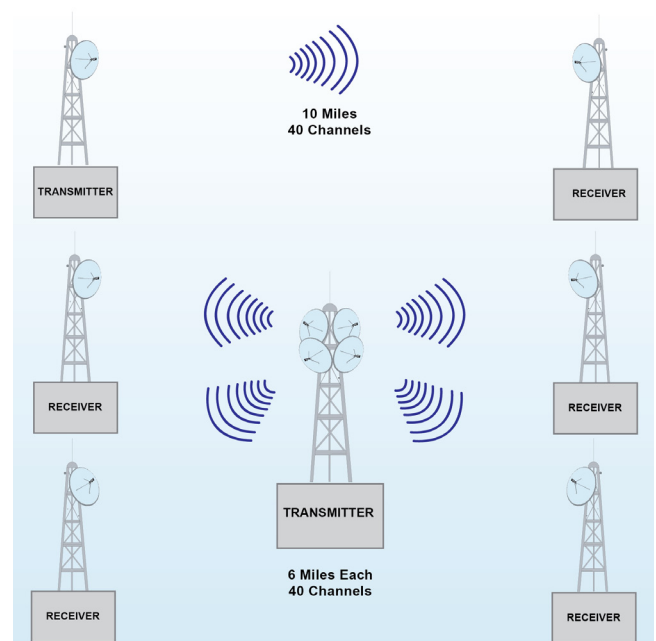
The ITX-005 is a solid state broadband transmitter designed to implement high quality, cost-effective microwave links for transporting up to 80 television channels.

This transmitter can be used to feed a single link or several links simultaneously. A typical application example would be a single 10-mile (16 kilometer) link with 40 channel loading, or 4 simultaneous links of 6 miles (10 kilometers) each.

The ITX-005 is rack mounted for convenience and ease of access to components. It incorporates the latest Gallium Arsenide power amplifier technology to deliver a clean, reliable signal.

Output signal monitoring and diagnostic measurements are available locally or remotely via Internet.

Designed for many years of trouble-free operation, the ITX-005 can be field upgraded to higher power units of the ITX solid state family of transmitters.



# Product Specification<sup>1</sup>

# CABLE AML

<b>Transmitter</b>																					
Input Frequency <sup>2</sup> :	54 to 550 MHz																				
Nominal Input Level for 12 TV:	+13 dBmV (-36 dBm)																				
Output Frequency <sup>2</sup> :	12.7 to 13.25 GHz																				
Output Level for 65 dB C/CTB:	<table border="1"><thead><tr><th>Channels</th><th>dBm/Channel</th><th>C/N (dB)</th></tr></thead><tbody><tr><td>12</td><td>2.0</td><td>65.0</td></tr><tr><td>21</td><td>-0.5</td><td>62.5</td></tr><tr><td>35</td><td>-3.0</td><td>60.0</td></tr><tr><td>60</td><td>-5.5</td><td>57.5</td></tr><tr><td>80</td><td>-7.0</td><td>56.0</td></tr></tbody></table>			Channels	dBm/Channel	C/N (dB)	12	2.0	65.0	21	-0.5	62.5	35	-3.0	60.0	60	-5.5	57.5	80	-7.0	56.0
	Channels	dBm/Channel	C/N (dB)																		
	12	2.0	65.0																		
	21	-0.5	62.5																		
	35	-3.0	60.0																		
	60	-5.5	57.5																		
80	-7.0	56.0																			
Normal Gain <sup>3</sup> :	32 dB																				
Frequency Response:	±1 dB																				
Frequency Stability:	0.0005%																				
Input Return Loss:	15 dB																				
Input Connector:	Type "F"																				
Output Return Loss:	18 dB																				
RF Output Connector	WR-75 Waveguide																				
Temperature Range:	60° to 100°F (16° to 32°C)																				
Humidity:	95% max.																				
Primary Power:	120/240 VAC, 50/60Hz (per customer specification)																				
Power Consumption:	250 VA RMS																				
Mounting:	19" EIA Standard Relay Rack																				
Weight:	30.0 lb. (13.6 kg)																				
Dimensions:	19" W x 7" H x 20" D (48.26cm W x 17.78cm H x 50.88cm D)																				

<sup>1</sup> Specifications subject to change without prior notice.

<sup>2</sup> For Group C. Other frequencies available.

<sup>3</sup> Gain may be varied with 10dB attenuator.