

OTX-002 OUTDOOR BROADBAND TRANSMITTER

- **Broadband Transmitter with 80 Channel Capability**
- **Can Feed a 6 Mile Link with 40 Channels or Four Receivers at 3 Miles each**
- **Outdoor Enclosure**
- **Modular Design**
- **Digital Ready**



PRODUCT APPLICATION:

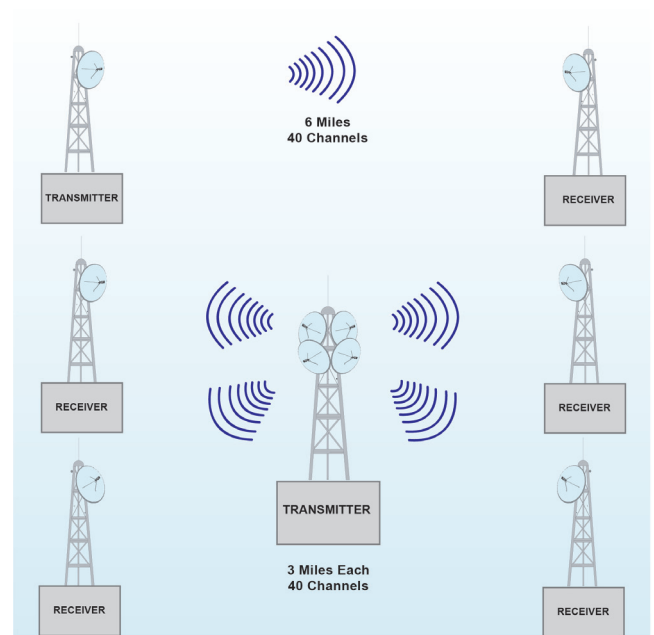
The OTX-002 Transmitter is an outdoor, solid state, broadband transmitter designed to implement high quality, cost-effective microwave links for transporting up to 80 television channels.

This transmitter can be used to feed a single link or several links simultaneously. A typical application example is a single 6-mile (10km) link with 40 channel loading, or 4 simultaneous links of 3 miles (5km) each.

The OTX-002 features operating diagnostics such as output signal level monitoring, DRO status and power supply voltages. Remote diagnostics monitoring is offered as an option.

The transmitter incorporates Automatic Gain Control (AGC) to maintain constant gain over the operating temperature range, a low-noise crystal-controlled reference oscillator and solid state GaAs power amplifier for best reliability and performance.

Designed for many years of trouble-free operation, the OTX-002 can be upgraded to higher power models of the OTX solid state family of transmitters.



Product Specification¹

CABLE AML

Transmitter																					
Input Frequency ² :	54 to 550 MHz																				
Nominal Input Level for 12 TV:	+10 dBmV (-39 dBm)																				
Output Frequency ² :	12.7 to 13.25 GHz																				
Output Level for 65 dB C/CTB:	<table border="1"> <thead> <tr> <th>Channels</th> <th>dBm/Channel</th> <th>C/N (dB)</th> </tr> </thead> <tbody> <tr> <td>12</td> <td>-1.0</td> <td>61.0</td> </tr> <tr> <td>21</td> <td>-3.5</td> <td>58.5</td> </tr> <tr> <td>35</td> <td>-6.0</td> <td>56.0</td> </tr> <tr> <td>60</td> <td>-8.5</td> <td>53.5</td> </tr> <tr> <td>80</td> <td>-9.5</td> <td>52.5</td> </tr> </tbody> </table>			Channels	dBm/Channel	C/N (dB)	12	-1.0	61.0	21	-3.5	58.5	35	-6.0	56.0	60	-8.5	53.5	80	-9.5	52.5
	Channels	dBm/Channel	C/N (dB)																		
	12	-1.0	61.0																		
	21	-3.5	58.5																		
	35	-6.0	56.0																		
	60	-8.5	53.5																		
80	-9.5	52.5																			
Normal Gain ³ :	33 dB																				
Frequency Response:	±1 dB																				
Frequency Stability:	0.0005%																				
Input Return Loss:	15 dB																				
Input Connector:	Type "F"																				
Output Return Loss:	18 dB																				
RF Output Connector	WR-75 Waveguide																				
Temperature Range:	40° to 120°F (40° to 49°C)																				
Humidity:	100% max.																				
Primary Power:	60/120/240 VAC, 50/60Hz or 12/24 VDC (per customer specification)																				
Power Consumption:	250 VA RMS																				
Mounting:	Antenna Pole Mount																				
Weight:	50 lb. (22.7 kg)																				
Dimensions:	16" W x 13" H x 7" D (40.6cm W x 33cm H x 17.8cm D)																				

¹ Specifications subject to change without prior notice.

² For Group C. Other frequencies available.

³ Gain may be varied with 10dB attenuator.