

## OTX-005 OUTDOOR BROADBAND TRANSMITTER

- **Broadband Transmitter with 80 Channel Capability**
- **Can Feed One Link at 10 Miles or Four Links of 6 Miles Each**
- **Outdoor Enclosure**
- **Modular Design**
- **Digital Ready**



### PRODUCT APPLICATION:

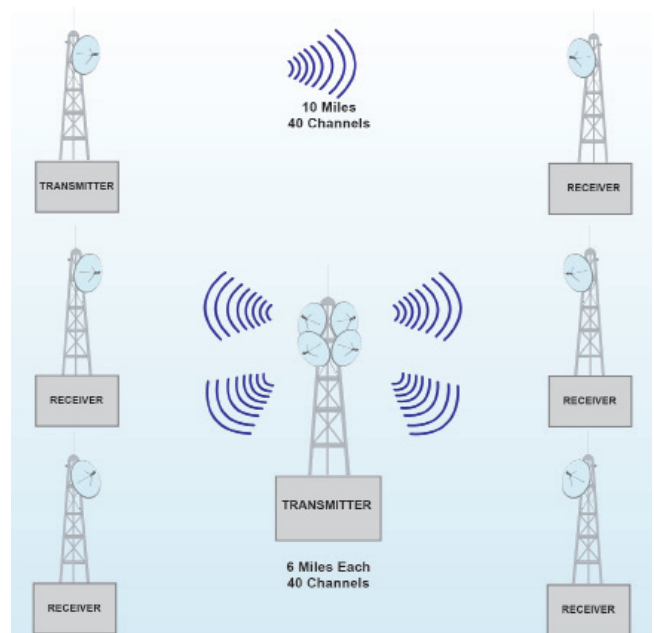
The OTX-005 Transmitter is an outdoor, solid state, broadband transmitter designed to implement high quality, cost-effective microwave links for transporting up to 80 television channels.

This transmitter can be used to feed a single link or several links simultaneously. A typical application example is a single 10-mile (16 km) link with 40 channel loading or four simultaneous links of 6 miles (9.6 kilometers) each.

The OTX-005 features operating diagnostics such as output signal level monitoring, phase-lock status and power supply voltages. Remote diagnostics monitoring is offered as an option.

The transmitter incorporates Automatic Gain Control (AGC) to maintain constant gain over the operating temperature range, a low-noise crystal-controlled reference oscillator and solid state GaAs power amplifier for best reliability and performance.

Designed for many years of trouble-free operation, the OTX-005 can be upgraded to the higher power OTX-005+.



# Product Specification<sup>1</sup>

# CABLE AML

<b>Transmitter</b>																					
Input Frequency <sup>2</sup> :	54 to 550 MHz																				
Nominal Input Level for 12 TV:	+13 dBmV (-36 dBm)																				
Output Frequency <sup>2</sup> :	12.7 to 13.25 GHz																				
Output Level for 65 dB C/CTB:	<table border="1"> <thead> <tr> <th>Channels</th> <th>dBm/Channel</th> <th>C/N (dB)</th> </tr> </thead> <tbody> <tr> <td>12</td> <td>2.0</td> <td>65.0</td> </tr> <tr> <td>21</td> <td>-0.5</td> <td>62.5</td> </tr> <tr> <td>35</td> <td>-3.0</td> <td>60.0</td> </tr> <tr> <td>60</td> <td>-5.5</td> <td>57.5</td> </tr> <tr> <td>80</td> <td>-7.0</td> <td>56.0</td> </tr> </tbody> </table>			Channels	dBm/Channel	C/N (dB)	12	2.0	65.0	21	-0.5	62.5	35	-3.0	60.0	60	-5.5	57.5	80	-7.0	56.0
	Channels	dBm/Channel	C/N (dB)																		
	12	2.0	65.0																		
	21	-0.5	62.5																		
	35	-3.0	60.0																		
	60	-5.5	57.5																		
80	-7.0	56.0																			
Normal Gain <sup>3</sup> :	32 dB																				
Frequency Response:	±1 dB																				
Frequency Stability:	0.0005%																				
Input Return Loss:	15 dB																				
Input Connector:	Type "F"																				
Output Return Loss:	18 dB																				
RF Output Connector	WR-75 Waveguide																				
Temperature Range:	40° to 120°F (40° to 49°C)																				
Humidity:	100% max.																				
Primary Power:	60/120/240 VAC, 50/60Hz or 12/24 VDC (per customer specification)																				
Power Consumption:	100 VA RMS																				
Mounting:	Antenna Pole Mount																				
Weight:	50 lb. (22.7 kg)																				
Dimensions:	16" W x 13" H x 7" D (40.6cm W x 33cm H x 17.8cm D)																				

<sup>1</sup> Specifications subject to change without prior notice.

<sup>2</sup> For Group C. Other frequencies available.

<sup>3</sup> Gain may be varied with 10dB attenuator.