

OTX-011 OUTDOOR BROADBAND TRANSMITTER

- **High Power Broadband Transmitter with 80 Channel Capacity**
- **Can Feed One link of 20 Miles or Four links of 10 Miles with 40 Channel Loading**
- **Solid State Replacement for Multiple Channelized Transmitters**
- **Optional remote diagnostics (PC compatible)**
- **Digital Ready**



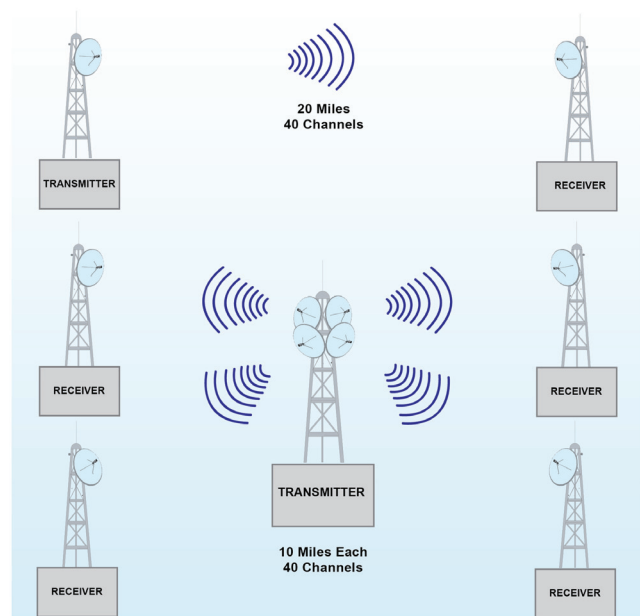
PRODUCT APPLICATION:

The OTX-011 is a solid state broadband transmitter designed to implement high quality, cost-effective microwave links for transporting up to 80 television channels.

This transmitter can be used to feed a single link or several links simultaneously. A typical application example would be a single 20-mile (32 kilometer) link with 40 channel loading, or 4 simultaneous links of 10 miles (16 kilometers) each.

This transmitter can be used to replace older channelized units. The OTX-011 is an outdoor unit designed for tower mounting. Designed for many years of trouble-free operation, the OTX-011 incorporates the latest Gallium Arsenide power amplifier technology to deliver a clean, reliable signal.

Output signal monitoring and operating diagnostic measurements are easily performed without interrupting operation.



Product Specification¹



Transmitter																					
Input Frequency:	54 to 550 MHz																				
Input Level (80 channel loading):	+14 dBmV (-35 dBm per Channel)																				
Output Frequency:	12.7 to 13.25 GHz																				
Output Level for 65 dB C/CTB:	<table border="1"> <thead> <tr> <th>Channels</th> <th>dBm/Channel</th> <th>C/N (dB)</th> </tr> </thead> <tbody> <tr> <td>12</td> <td>10</td> <td>63.0</td> </tr> <tr> <td>21</td> <td>7.5</td> <td>60.5</td> </tr> <tr> <td>35</td> <td>5.0</td> <td>58.0</td> </tr> <tr> <td>60</td> <td>2.5</td> <td>55.5</td> </tr> <tr> <td>80</td> <td>1.0</td> <td>54.0</td> </tr> </tbody> </table>			Channels	dBm/Channel	C/N (dB)	12	10	63.0	21	7.5	60.5	35	5.0	58.0	60	2.5	55.5	80	1.0	54.0
Channels	dBm/Channel	C/N (dB)																			
12	10	63.0																			
21	7.5	60.5																			
35	5.0	58.0																			
60	2.5	55.5																			
80	1.0	54.0																			
Normal Gain:	36 dB																				
Frequency Response:	±1 dB																				
Frequency Stability:	0.0005%																				
Input Return Loss:	15 dB																				
Input Connector:	5/8" X 24																				
Output Return Loss:	18 dB																				
UHF Output Connector:	WR-75 Waveguide																				
Temperature Range:	-40° to 113°F (-40° to 45°C)																				
Humidity:	100% max.																				
Primary Power:	120 VAC, 50/60 Hz																				
Power Consumption:	300 VA RMS																				
Mounting:	4.5" PIPE																				
Weight:	250 lbs. (114 kg)																				
Dimensions:	20" rack Width x 24" Height x 19" Depth (51cm W x 61cm H x 48cm D)																				

¹ Specifications subject to change without prior notice.