

OTX-005+ OUTDOOR BROADBAND TRANSMITTER

- **Broadband Transmitter with 80 Channel Capability**
- **Can Feed One Link at 14 Miles or Four Links of 9 Miles Each with 40 Channel Loading**
- **Outdoor Enclosure, Modular Design**
- **Option Remote Diagnostics (PC Compatible)**
- **Digital Ready**



PRODUCT APPLICATION:

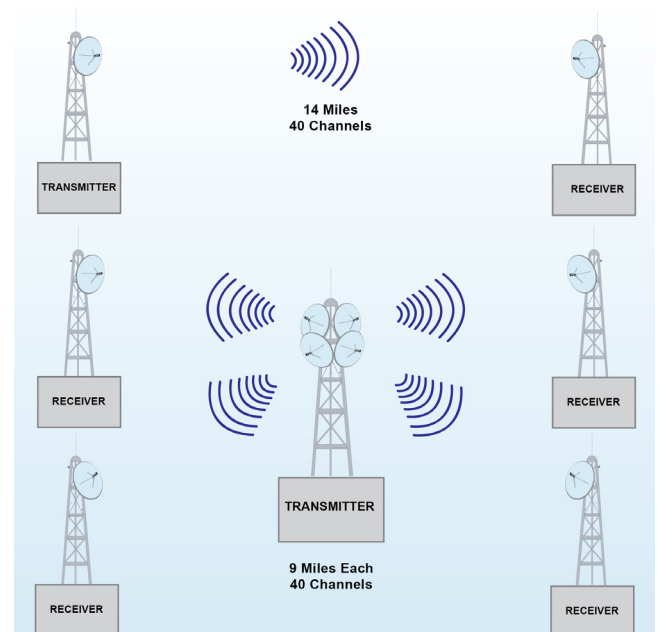
The OTX-005+ Transmitter is an outdoor, solid state, broadband transmitter designed to implement high quality, cost effective microwave links for transporting up to 80 television channels.

This transmitter can be used to feed a single link or several links simultaneously. A typical application example would be a single 14-mile (22.4 km) link with 40 channel loading, or four simultaneous links of 9 miles (13.4 kilometers) each.

The OTX-005+ features operating diagnostics such as output signal level monitoring, phase-lock status and power supply voltages. Remote diagnostics monitoring is offered as an option.

The transmitter incorporates Automatic Gain Control (AGC) to maintain constant gain over the operating temperature range, a State-of-the-Art, low-noise, crystal-controlled reference oscillator and solid state, GaAs power amplifier for best reliability and performance.

The OTX-005+ delivers power without compromising reliability by keeping the power amplifier operating temperature below recommended limits by means of linearization techniques with a proven performance record.



Product Specification¹

CABLE AML

Transmitter																					
Input Frequency ² :	54 to 550 MHz																				
Nominal Input Level for 12 TV:	+10 dBmV (-39 dBm)																				
Output Frequency ² :	12.7 to 13.25 GHz																				
Output Level for 65 dB C/CTB:	<table border="1"> <thead> <tr> <th>Channels</th> <th>dBm/Channel</th> <th>C/N (dB)</th> </tr> </thead> <tbody> <tr> <td>12</td> <td>5.5</td> <td>66.0</td> </tr> <tr> <td>21</td> <td>3.0</td> <td>63.5</td> </tr> <tr> <td>35</td> <td>0.5</td> <td>61.0</td> </tr> <tr> <td>60</td> <td>-2.0</td> <td>58.5</td> </tr> <tr> <td>80</td> <td>-3.5</td> <td>57.0</td> </tr> </tbody> </table>			Channels	dBm/Channel	C/N (dB)	12	5.5	66.0	21	3.0	63.5	35	0.5	61.0	60	-2.0	58.5	80	-3.5	57.0
	Channels	dBm/Channel	C/N (dB)																		
	12	5.5	66.0																		
	21	3.0	63.5																		
	35	0.5	61.0																		
	60	-2.0	58.5																		
80	-3.5	57.0																			
Normal Gain ³ :	38 dB																				
Frequency Response:	±1 dB																				
Frequency Stability:	0.0005%																				
Input Return Loss:	15 dB																				
Input Connector:	Type "F"																				
Output Return Loss:	18 dB																				
RF Output Connector	WR-75 Waveguide																				
Temperature Range:	40° to 120°F (40° to 49°C)																				
Humidity:	100% max.																				
Primary Power:	60/120/240 VAC, 50/60Hz or 12/24 VDC (per customer specification)																				
Power Consumption:	100 VA RMS																				
Mounting:	Antenna Pole Mount																				
Weight:	50 lb. (22.7 kg)																				
Dimensions:	16" W x 13" H x 7" D (40.6cm W x 33cm H x 17.8cm D)																				

¹ Specifications subject to change without prior notice.

² For Group C. Other frequencies available.

³ Gain may be varied with 10dB attenuator.